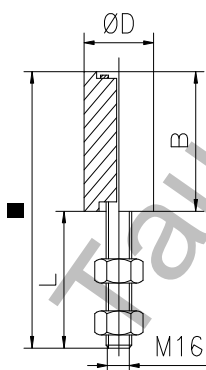


Ролка Estebro® за плъзгащи се врати с горно водене ф 40x60 мм, пластмасова



Family: Rollers

Material: Roller of injected nylon. Axle of 11SMn30 steel

Finish: Zinc-plated

Description: Nylon roller installed as a guide for the upper part of sliding doors to avoid the oscillation during the opening and closing movements. It is necessary a previous anchoring to install it with a threaded rod (M. in annex table).

Cod.	Medidas Dimensions	A	B	L	ØD		
700	25x35	70	35	35	25	24	2,90
133	30x30	70	30	40	30	36	4,70
132	35x35	110	35	75	35	25	4,95
134	40x40	80	40	40	40	20	3,45
1342	40x40	110	40	70	40	40	8,45
701	40x60	109	60	49	40	16	3,75
Acero Inoxidable - Inox - Stainless Steel							AISI 303
1332	30x30	70	30	40	30	12	1,60
1321	35x35	110	35	75	35	10	2,00
1341	40x40	80	40	40	40	8	1,45

Продукт: [Ролка Estebro® за плъзгачи се врати с горно водене ф 40x60 мм, пластмасова](#)

Категория: [Плъзгачи се врати](#)

Бранд: [Estebro®](#)

Категория бранд: [Ролка Estebro®](#)